



INTRODUCING

FLAWLESS SOLUTION FOR YOUR BIOCHEMISTRY WORKLOAD

BONAVERA^{CHEM} 200



Long Lasting Consistency

Precision & Accuracy

Powerful Backup

Ease of Use

Economy

FULLY AUTOMATED BIOCHEMISTRY ANALYZER

SALIENT FEATURES

- Fully Automated, Discrete, Random Access Biochemistry Analyzer
- Throughput Up to 200 Test Per Hour with STAT facility
- On Board Laundry as well as On Board Cooling Facilities
- Advance User-Friendly Operating System
- Long Lasting Durable Optical System using IFCOS
- Integrated Barcoded Reagent System

TOLL FREE 1800-270-1027 (INDIA)

www.biogenydiagnostics.com



Reagent & Sampling Compartment

Equipped with **Onboard** cooling facility

40 Reagent Position using dedicated bottle types

40 sample position which can accommodate all types of sample cups, Primary Tubes, Blood Collection Tubes (Clot Activator)



Multifunctional Probe for Reagent / Sample

Internally & Externally **Polished** to resist carryover

Specially designed **waterfall washing** system

Equipped with vertical collision protection & Auto depth adjustment



Homogenous Mixing

Specially designed Teflon Coated Mixture with standardized step procedure for uniform mixing

Smooth Coating prevents water dropping & Cross Contamination

Reaction Area & Optical System

44 Semi Permanent & Reusable Pyrex Cuvettes which can run for >1500 Tests

Reaction Volume from 150µl to 350µl

Cuvette washing by On Board Laundry facility using 2 Step 6 Stop Washing

Cuvette Integrity Check at all wavelengths before the analysis

Reaction Area with unique Air Incubation system to maintain the Temperature of $37^{\circ} \pm 0.1^{\circ} \text{C}$

Integrated Fully Closed Optical System with 8 Short Bandwidth Interference filters.

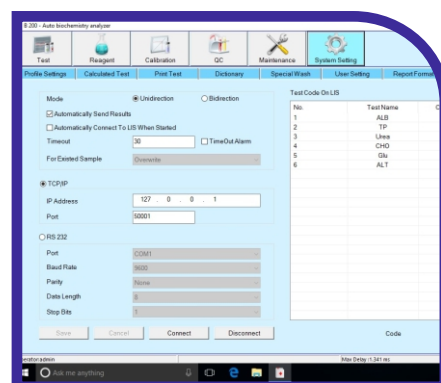


Advance Operating System

Easy to Use Window Base operating System

On Line Reaction & Calibration Curve

Reagent Inventory management System



Better Usability

Easy Lamp Assembly Changing Facility

Separate Power switch for refrigeration compartment



TECHNICAL SPECIFICATIONS

Sample Unit

Sample Tray	- 40 Sample Positions
Sample Tube	- Micro cup & test tube, blood collection tube can also be used
Sample Volume	- 2-30 μ l, step by 0.1 μ l
Sample Barcode	- Optional

Reagent Unit

Reagent Tray	- 40 reagent positions with constant temperature 2°C-14°C
Reagent Volume	- 20 - 300 μ l, step by 1 μ l
Reagent Needle	- Reagent volume detection, Collision protection

Operating System

Operating System	- Windows 7, Windows 8, Windows 10
Data Processing	- Automatic Calibration, Blank deduction, Dirty cuvette memory, Editable, reference ranges, Customized sample dilution, Panel test.....
Report Printings	- 6 formats optional TCP/IP network interfacing

Optical System

Light Source	- Halogen Lamp
Wavelength	- 340nm, 405nm, 450nm, 505nm, 546nm, 578nm, 630nm, 700nm
Absorbance Range	- 0-4
Resolution	- 0.0001 Abs

Working Condition

Power Supply	- AC 110/220V +10% 50/60 Hz 650W Online UPS (230V) with isolated transformer 2KVA
Dimension	- 870 x 690 x 740 mm (LxWxH)
Weight	- 80 kgs

Marketed By



Factory & Registered Office:
Plot No.1,2 Survey No. 169 (Sisodra) Near Plot No. 425,
New GIDC, Kabilpore, Navsari - 396 424, (Guj), India
Ph : +91-93757 94111 | E-mail : biogeny@beaconindia.com
Web : www.biogenydiagnostics.com | CIN No. : U24299GJ2009PTC057520

BONAVERA^{CHEM}200

READY TO USE SYSTEM

PACK REAGENTS

ALBUMIN
ALP
AMYLASE
ASO TURBI
BILIRUBIN (TOTAL & DIRECT)
BILIRUBIN (TOTAL)
BILIRUBIN (DIRECT)
CALCIUM
CHOLESTEROL
CK-NAC
CREATININE ENZYMATIC
CRP TURBI
GLUCOSE
HBA1C
HDL DIRECT
PHOSPHORUS
LDH
LDL DIRECT
MAGNESIUM
RF TURBI
SGOT
SGPT
TOTAL PROTEIN
TRIGLYCERIDES
UREA UV
URIC ACID
GAMMA GT
CONTROL & CALIBRATORS

TOLL FREE
1800-270-1027